



2022
ADVENTURE
WORKBOOK

—

NO SHORTCUTS





SCOTT
A D V E N T U R E
A P P A R E L

THE FULL SCOTT ADVENTURE APPAREL LINE IS
EN 17092-3:2020, CLASS AA CERTIFIED





ADV TERRAIN DRYO

SCOTT ADV TERRAIN DRYO JACKET

285594



D3O

DEXFIL

YKK
Little Parts. Big Difference.

The SCOTT Terrain Dryo Adventure Jacket is the perfect choice for long distance trips in varied conditions, boasting the perfect blend of comfort, durability and weather protection thanks to a breathable, wind and waterproof Twin HD Nylon Z-liner DRYOsphere membrane. A 60gr Removable thermal lining allows you to be prepared for anything, and a side ventilation system helps keep you cool when the ride heats up. With safety in mind, the Terrain Dryo Jacket comes with D3O® protectors at the shoulder and elbow and has optional pockets for chest and back protectors.

CERTIFICATION LEVEL: CE Certified CAT. 2 according to EN 17092-3 (Class AA), SHOULDERS AND ELBOWS: EN 1621-1 Level 2

CONSTRUCTION: TwinHD Polyamide with C0 DWR. Breathable, wind and waterproof Z-liner DRYOsphere membrane

COMPOSITION: SHELL FABRIC: 100% Polyamide, MEMBRANE: 100% Polyurethane, LINING: 71% Polyester, 29% Polyamide, INSERT: 50% Polyamide, 50% Polyester, INSULATION: 100% Polyester

INSULATION: Breathable microD mesh lining, Removable thermal lining with 60gr filling

FIT: Regular

SIZE: XS-4XL (DM-D4XL)

APPROX. WEIGHT (KG): 2.2

WATERPROOFNESS: 10.000mm, MVTR 8.000g/m²/24h

FEATURES:

- + Ventilation system at the sideseams
- + Glove friendly zipper handle
- + Waterproof labyrinth closure system
- + D3O protectors at shoulder and elbow. Pocket for optional back protector
- + Inner pockets for D3O chest protectors
- + Hybrid elbow protector pocket for two height positions
- + Reflective elements for best visibility
- + 76cm long connection zipper
- + 4 inner pockets
- + 4 outer pockets
- + 1 chest pocket with goggle cloth inside
- + 1 rear pocket
- + Magnet collar closes automatically, while the double sided YKK FlexFix® avant snap keeps the collar closed or open for ventilation
- + Adjustments at waist, hem and cuff



black
0001

SCOTT ADV TERRAIN DRYO PANT

285595



D3O

DEXFIL

YKK
Little Parts. Big Difference.

The SCOTT Terrain Dryo Adventure Pant is the perfect choice for long distance trips in varied conditions, boasting the perfect blend of comfort, durability and weather protection thanks to a breathable, wind and waterproof Twin HD Nylon with Z-liner DRYOsphere membrane. A breathable mesh lining provides added comfort when in the saddle for long periods, whilst reflective elements work as an added safety feature. With safety in mind, the Terrain Dryo Pant also comes with D3O® protectors at the knee and hip.

CERTIFICATION LEVEL: CE Certified CAT. 2 according to EN 17092-3 (Class AA), KNEES AND HIPS: EN 1621-1 Level 2

CONSTRUCTION: TwinHD Polyamide with C0 DWR. Breathable, wind- and waterproof Z-liner DRYOsphere membrane

COMPOSITION: SHELL FABRIC: 100% Polyamide, MEMBRANE: 100% Polyurethane, LINING: 85% Polyester, 15% Polyamide

INSULATION: Brushed, breathable mesh lining

FIT: Regular

SIZE: XS-4XL (DM-D4XL- TM-T2XL)

APPROX. WEIGHT (KG): 1.6

WATERPROOFNESS: 10.000mm, MVTR 8.000g/m²/24h

FEATURES:

- + Glove friendly zipper handle
- + Comfortable fleece lining inside the waistband
- + D3O protectors at knee and hip
- + Knee protector pocket with three height positions
- + Reflective elements for best visibility
- + Anti-slip panel at bottom area
- + 76cm long connection zipper
- + 2 outer pockets with fleece inlay
- + 2 outer pockets with fleece inlay
- + Adjustment at waist and cuff



black
0001



black/grey
1001



PRIORITY GTX

SCOTT PRIORITY GTX JACKET

272869



The top of the line, SCOTT Priority GTX Jacket features wind- and waterproof 3-layer GORE-TEX fabric and Pittards® leather reinforcements for additional durability. Made for 3 seasons, the direct ventilation system and teethless waterproof zippers make it easy to adjust in changing conditions. For your safety, this jacket features D3O® protectors at shoulder and elbow and has optional pockets for chest- and back protectors.

CERTIFICATION LEVEL: CE Certified CAT. 2 according to EN 17092-3 (Class AA), SHOULDERS AND ELBOWS: EN 1621-1 Level 2

CONSTRUCTION: Direct laminated, breathable, wind- and waterproof 3-layer GORE-TEX membrane

COMPOSITION: SHELL FABRIC: 75% Polyamide, 20% Polyester, 5% Leather, MEMBRANE: 100% Polytetrafluorethylene, LINING: 100% Polyester, INSULATION: 100% Polyester

INSULATION: Comfortable soft and breathable mesh lining with special vented 3D mesh mapping. Removable thermal lining with 60gr filling at body and 40gr at sleeves

FIT: Regular

SIZE: XS-4XL

APPROX. WEIGHT (KG): 2.8kg

WATERPROOFNESS: watertight (waterpillar 28.000 mm), MVTR >=20.000g/m²

FEATURES:

- + Comfortable soft and high collar system
- + Direct ventilation system with teethless waterproof zipper
- + Climate comfort by ventilation system
- + Waterproof storm cuff with thumb loop
- + YKK Aquaguard® Zippers
- + D3O® protectors at shoulder and elbow
- + Pocket for optional back protector with size information
- + Inner pockets for optional divided D3O chest protectors
- + Pittards® Keratan™ leather for reinforcements at elbow and shoulder
- + 76cm long connection zipper
- + Fidlock® magnetic closure system at collar
- + Adjustments at waist, hem, sleeve and cuff
- + Inner kidney insulation system
- + Wearable with open and closed collar
- + Glove-friendly zipper handle
- + Easy to handle one-zip weather protection
- + Hybrid elbow protector pocket for two height positions
- + Reflective elements for best visibility
- + 2 inner pockets
- + 2 waterproof outer pockets
- + 1 chest pocket with Easy-fix zip handle system and goggle cloth
- + Climate control by our removable collar system



black
0001

SCOTT PRIORITY GTX PANT

272873



Like the jacket, the SCOTT Priority GTX Pant features wind- and waterproof 3-layer GORE-TEX fabric and Pittards® leather reinforcements for additional durability. The direct ventilation system and teethless waterproof zippers make it easy to adjust in changing conditions. For your safety these pants feature D3O® protectors at knee and hip.

CERTIFICATION LEVEL: CE Certified CAT. 2 according to EN 17092-3 (Class AA), KNEES AND HIPS: EN 1621-1 Level 2

CONSTRUCTION: Direct laminated, breathable, wind- and waterproof 3-layer GORE-TEX membrane

COMPOSITION: SHELL FABRIC: 80% Polyamide, 15% Polyester, 5% Leather, MEMBRANE: 100% Polytetrafluorethylene, LINING: 100% Polyester, INSULATION: 100% Polyester

INSULATION: Comfortable soft and breathable mesh lining with special vented 3D mesh mapping at seat area, Removable thermal lining with super soft 40gr Dexfil® filling

FIT: Regular

SIZE: XS-4XL

APPROX. WEIGHT (KG): 2.15kg

WATERPROOFNESS: WATERTIGHT (WATER COLUMN: 28000 mm), MVTR >=20.000g/m²

FEATURES:

- + High waisted kidney area
- + Spacer mesh inside lining at bottom for comfortable riding
- + Direct ventilation system with teethless waterproof zipper
- + D3O® protectors at knee and hip
- + Knee protector pocket with multiple height positions
- + Pittards® Keratan™ leather for reinforcements at hip and knee
- + 76cm long connection zipper
- + 2 outer pockets with fleece inlay
- + Adjustments at waist and hem
- + Comfortable fleece lining inside the waistband
- + Reflective elements for best visibility
- + Anti-slip panel at bottom area
- + Extra strong, colored YKK FlexFix® avant snap
- + Snap and hook closure



VOYAGER DRYO

SCOTT VOYAGER DRYO JACKET

272870



D3O

DEXFIL

YKK
Little Parts. Big Difference.

Born to beat the elements the new SCOTT Voyager Dryo Jacket is as tough as it is comfortable. The jacket comes with directly laminated, breathable, wind- and waterproof DRYOsphere membrane. It is well ventilated and gives you ideal climate comfort for diverse weather conditions. Safety features include D3O® protectors at shoulder and elbow with optional pockets for chest- and back protectors.

CERTIFICATION LEVEL: CE Certified CAT. 2 according to EN 17092-3 (Class AA), SHOULDERS AND ELBOWS: EN 1621-1 Level 2

CONSTRUCTION: 500D Polyamide fabric with direct laminated, breathable, wind- and waterproof 2-layer DRYOsphere membrane

COMPOSITION: SHELL FABRIC: 100% Polyamide, MEMBRANE: 100% Polyurethane, LINING: 100% Polyester, INSULATION: 100% Polyester

INSULATION: Comfortable soft and breathable mesh lining with special vented 3D mesh mapping. Removable thermal lining with 60gr filling at body and 40gr at sleeves

FIT: Regular

SIZE: XS-4XL

APPROX. WEIGHT (KG): 2.5kg

WATERPROOFNESS: watertight (waterpillar 10.000 mm), MVTR >=10.000g/m²

FEATURES:

- + Comfortable soft and high collar system
- + Ventilation with easy magnetic system
- + Climate comfort by chest, back and sleeve ventilation
- + D3O protectors at shoulder and elbow
- + Pocket for optional back protector with size information
- + Inner pockets for optional divided D3O chest protectors
- + Hybrid elbow protector pocket for two height positions
- + 76cm long connection zipper
- + Magnet collar close automatically, while the double sided YKK FlexFix® avant snap keep the collar close or open for ventilation
- + Adjustments at waist, hem, sleeve and cuff
- + Inner kidney insulation system
- + Wearable with open and closed collar
- + Stretchable waistband for best fitting
- + Inner front flap insulation



SCOTT VOYAGER DRYO PANT

272874



D3O

DEXFIL

YKK
Little Parts. Big Difference.

Matching the jacket, the SCOTT Voyager Dryo Pant is made for diverse weather conditions. Well ventilated and with stretch panels for best action, these pants won't let you down. D3O® protectors at knee and hip with multiple height positions give you the additional safety during your adventure out.

CERTIFICATION LEVEL: CE Certified CAT. 2 according to EN 17092-3 (Class AA), KNEES AND HIPS: EN 1621-1 Level 2

CONSTRUCTION: 500D Polyamide fabric with direct laminated, breathable, wind- and waterproof 2-layer DRYOsphere membrane

COMPOSITION: SHELL FABRIC: 100% Polyamide, MEMBRANE: 100% Polyurethane, LINING: 100% Polyester, INSULATION: 100% Polyester

INSULATION: Comfortable soft and breathable mesh lining with special vented 3D mesh mapping at seat area, Removable thermal lining with 40gr filling

FIT: Regular

SIZE: XS-4XL

APPROX. WEIGHT (KG): 1.9kg

WATERPROOFNESS: watertight (waterpillar 10.000 mm), MVTR >=10.000g/m²

FEATURES:

- + Comfortable fleece lining inside the waistband
- + Stretch panels for best action
- + D3O protectors at knee and hip
- + Knee protector pocket with multiple height positions
- + Synthetic leather reinforcements with embossing inside the knee
- + 76cm long connection zipper
- + 2 outer pockets with fleece inlay
- + 1 watertight cargo pocket
- + Adjustments at waist and hem
- + Reflective elements for best visibility
- + Anti-slip panel at bottom area
- + Extra strong, colored YKK FlexFix® avant snap
- + Snap and hook closure



black
0001



grey/night blue
6366



iron grey/beige
6367



VOYAGER DRYO WOMEN



Born to beat the elements the new SCOTT Voyager Dryo Women's Jacket is as tough as it is comfortable. The jacket comes with directly laminated, breathable, wind- and waterproof DRYOsphere membrane. It is well ventilated and gives you ideal climate comfort for diverse weather conditions. Safety features include D3O® protectors at shoulder and elbow with optional pockets for chest- and back protectors.

CERTIFICATION LEVEL: CE Certified CAT. 2 according to EN 17092-3 (Class AA), SHOULDERS AND ELBOWS: EN 1621-1 Level 2

CONSTRUCTION: 500D Polyamide fabric with direct laminated, breathable, wind- and waterproof 2-layer DRYOsphere membrane

COMPOSITION: SHELL FABRIC: 100% Polyamide, MEMBRANE: 100% Polyurethane, LINING: 100% Polyester, INSULATION: 100% Polyester

INSULATION: Comfortable soft and breathable mesh lining with special vented 3D mesh mapping. Removable thermal lining with 60gr filling at body and 40gr at sleeves

FIT: Regular

SIZE: 36-48

APPROX. WEIGHT (KG): 2kg

WATERPROOFNESS: watertight (waterpillar 10.000 mm), MVTR >=10.000g/m²

FEATURES:

- + Comfortable soft and high collar system
- + Ventilation with easy magnetic system
- + Climate comfort by chest, back and sleeve ventilation
- + D3O protectors at shoulder and elbow
- + Pocket for optional back protector with size information
- + Inner pockets for optional divided D3O chest protectors
- + Hybrid elbow protector pocket for two height positions
- + 70cm long connection zipper
- + Magnet collar close automatically, while the double sided YKK FlexFix® avant snap keep the collar close or open for ventilation
- + Adjustments at waist, hem, sleeve and cuff
- + Inner kidney insulation system
- + Wearable with open and closed collar
- + Stretchable waistband for best fitting



SCOTT VOYAGER DRYO WOMEN'S PANT

272881



Matching the jacket, the SCOTT Voyager Dryo Women's Pant is made for diverse weather conditions. Well ventilated and with stretch panels for best action, these pants won't let you down. D3O® protectors at knee and hip with multiple height positions give you the additional safety during your adventure out.

CERTIFICATION LEVEL: CE Certified CAT. 2 according to EN 17092-3 (Class AA), KNEES AND HIPS: EN 1621-1 Level 2

CONSTRUCTION: 500D Polyamide fabric with direct laminated, breathable, wind- and waterproof 2-layer DRYOsphere membrane

COMPOSITION: SHELL FABRIC: 100% Polyamide, MEMBRANE: 100% Polyurethane, LINING: 100% Polyester, INSULATION: 100% Polyester

INSULATION: Comfortable soft and breathable mesh lining with special vented 3D mesh mapping at seat area, Removable thermal lining with 40gr filling

FIT: Regular

SIZE: 36-48

APPROX. WEIGHT (KG): 1.5kg

WATERPROOFNESS: watertight (waterpillar 10.000 mm), MVTR >=10.000g/m²

FEATURES:

- + Comfortable fleece lining inside the waistband
- + Stretch panels for best action
- + D3O protectors at knee and hip
- + Knee protector pocket with multiple height positions
- + Synthetic leather reinforcements with embossing inside the knee
- + 70cm long connection zipper
- + 2 outer pockets with fleece inlay
- + 1 watertight cargo pocket
- + Adjustments at waist and hem
- + Reflective elements for best visibility
- + Anti-slip panel at bottom area
- + Extra strong, colored YKK FlexFix® avant snap
- + Snap and hook closure



black
0001



DUALRAID DRYO

SCOTT DUALRAID DRYO JACKET

272871
(AVAILABLE IN D-SIZE)



YKK
Little Parts. Big Difference.

Redefining Adventure. The SCOTT Dualraid Dryo Jacket is the best choice for long adventures where durability, ventilation and comfort are a necessity. With a removable, breathable, wind- and waterproof 3-layer DRYOsphere membrane you can custom fit this jacket to any condition. With focus on safety, the Dualraid Dryo Jacket comes with D3O® protectors at shoulder and elbow and has optional pockets for chest- and back protectors.

CERTIFICATION LEVEL: CE Certified CAT. 2 according to EN 17092-3 (Class AA), SHOULDERS AND ELBOWS: EN 1621-1 Level 2

CONSTRUCTION: TwinHD Polyamide fabric with removable breathable, wind- and waterproof 3-layer DRYOsphere membrane

COMPOSITION: SHELL FABRIC: 94% Polyamide, 5% Leather, 1% Polyester, MEMBRANE: 100% Polyurethane, LINING: 100% Polyester, INSULATION: 100% Polyester

INSULATION: Comfortable soft and breathable mesh lining with special vented 3D mesh mapping
Removable 3-layer DRYOsphere inner jacket with partial 80gr Dexfil(R) filling

FIT: Regular

SIZE: XS-4XL
DM-D4XL

APPROX. WEIGHT (KG): 2.6kg

WATERPROOFNESS: watertight (waterpillar 10.000 mm), MVTR >=10.000g/m²

FEATURES:

- + Comfortable collar with soft binding
- + Climate comfort by chest, back and sleeve ventilation
- + D3O protectors at shoulder and elbow
- + Pocket for optional back protector with size information
- + Inner pockets for optional divided D3O chest protectors
- + Hybrid elbow protector pocket for two height positions
- + Washable 1.1mm cowhide leather reinforcement at elbow and shoulder
- + With two 76cm long connection zipper to attach on jacket and pant
- + Water bladder pocket for optional Hydrapak®
- + Adjustments at hem, sleeve and cuff
- + Wearable with open and closed collar
- + Ventilation with easy closure magnetic system
- + Stretchable waistband for best fitting
- + Waterproof labyrinth closure system



night blue/moss green
6368
(COLOR AVAILABLE IN D-SIZE)

SCOTT DUALRAID DRYO PANT

272875
(AVAILABLE IN D-SIZE AND TALL-SIZE)



YKK
Little Parts. Big Difference.

The SCOTT Dualraid Dryo Pant is designed to protect you in whatever condition you find yourself. It features a removable 3-layer DRYOsphere inner pant and is comfortable and breathable at the same time. D3O® protectors at knee and hip with multiple height positions give you the additional safety during your adventure out. Don't plan your next expedition without these pants.

CERTIFICATION LEVEL: CE Certified CAT. 2 according to EN 17092-3 (Class AA), KNEES AND HIPS: EN 1621-1 Level 2

CONSTRUCTION: TwinHD Polyamide fabric with removable breathable, wind- and waterproof 3-layer DRYOsphere membrane

COMPOSITION: SHELL FABRIC: 94% Polyamide, 5% Leather, 1% Polyester, MEMBRANE: 100% Polyurethane, LINING: 100% Polyester, INSULATION: 100% Polyester

INSULATION: Comfortable soft and breathable mesh lining, Removable 3-layer DRYOsphere inner pant with partial 80gr Dexfil® filling

FIT: Regular

SIZE: XS-4XL
DM-D4XL
TM-T4XL

APPROX. WEIGHT (KG): 1.55kg

WATERPROOFNESS: watertight (waterpillar 10.000 mm), MVTR >=10.000g/m²

FEATURES:

- + Comfortable fleece lining inside the waistband
- + Ventilation with easy closure magnetic system
- + Climate comfort by ventilation system
- + D3O protectors at knee and hip
- + Knee protector pocket with multiple height positions
- + Washable 1.1mm cowhide leather reinforcement at inside knee
- + Double fabric layers for reinforcement at knee and bottom
- + 76cm long connection zipper
- + 2 outer pockets
- + Adjustments at waist and hem
- + Stretch panels for best action
- + Anti-slip panel at bottom area
- + Large reflective panel for best visibility
- + Snap and hook closure



night blue
3032
(COLOR AVAILABLE IN D-SIZE)



grey/yellow
1120



black/iron grey
3862



sapphire blue/lunar grey
6370

(COLOR AVAILABLE IN D-SIZE)



grey/yellow
1120



black/iron grey
3862

(COLOR AVAILABLE IN D-SIZE AND TALL SIZE)



sapphire blue/lunar grey
6370

(COLOR AVAILABLE IN TALL-SIZE)



DUALRAID DRYO WOMEN'S

SCOTT DUALRAID DRYO WOMEN'S JACKET

272879



Redefining Adventure. The SCOTT Dualraid Dryo Women's Jacket is the best choice for long adventures where durability, ventilation and comfort are a necessity. With a removable, breathable, wind- and waterproof 3-layer DRYOsphere membrane you can custom fit this jacket to any condition. With focus on safety, the Dualraid Dryo W's Jacket comes with D3O® protectors at shoulder and elbow and has optional pockets for chest- and back protectors.

CERTIFICATION LEVEL: CE Certified CAT. 2 according to EN 17092-3 (Class AA), SHOULDERS AND ELBOWS: EN 1621-1 Level 2

CONSTRUCTION: TwinHD Polyamide fabric with removable breathable, wind- and waterproof 3-layer DRYOsphere membrane

COMPOSITION: SHELL FABRIC: 94% Polyamide, 5% Leather, 1% Polyester, MEMBRANE: 100% Polyurethane, LINING: 100% Polyester, INSULATION: 100% Polyester

INSULATION: Comfortable soft and breathable mesh lining with special vented 3D mesh mapping
Removable 3-layer DRYOsphere inner jacket with partial 80gr Dexfil(R) filling

FIT: Regular

SIZE: 36-48

APPROX. WEIGHT (KG): 2.2kg

WATERPROOFNESS: watertight (waterpillar 10.000 mm), MVTR >=10.000g/m²

FEATURES:

- + Comfortable collar with soft binding
- + Climate comfort by chest, back and sleeve ventilation
- + D3O protectors at shoulder and elbow
- + Pocket for optional back protector with size information
- + Inner pockets for optional divided D3O chest protectors
- + Hybrid elbow protector pocket for two height positions
- + Washable 1.1mm cowhide leather reinforcement at elbow and shoulder
- + With two 70cm long connection zipper to attach on jacket and pant
- + Water bladder pocket for optional Hydrapak®
- + Adjustments at hem, sleeve and cuff
- + Wearable with open and closed collar
- + Ventilation with easy closure magnetic system



SCOTT DUALRAID DRYO WOMEN'S PANT

272882



The SCOTT Dualraid Dryo Women's Pant is designed to protect you in whatever condition you find yourself. It features a removable 3-layer DRYOsphere inner pant and is comfortable and breathable at the same time. D3O® protectors at knee and hip with multiple height positions give you the additional safety during your adventure out. Don't plan your next expedition without these pants.

CERTIFICATION LEVEL: CE Certified CAT. 2 according to EN 17092-3 (Class AA), KNEES AND HIPS: EN 1621-1 Level 2

CONSTRUCTION: TwinHD Polyamide fabric with removable breathable, wind- and waterproof 3-layer DRYOsphere membrane

COMPOSITION: SHELL FABRIC: 94% Polyamide, 5% Leather, 1% Polyester, MEMBRANE: 100% Polyurethane, LINING: 100% Polyester, INSULATION: 100% Polyester

INSULATION: Comfortable soft and breathable mesh lining, Removable 3-layer DRYOsphere inner pant with partial 80gr Dexfil® filling

FIT: Regular

SIZE: 36-48

APPROX. WEIGHT (KG): 1.55kg

WATERPROOFNESS: watertight (waterpillar 10.000 mm), MVTR >=10.000g/m²

FEATURES:

- + Comfortable fleece lining inside the waistband
- + Ventilation with easy closure magnetic system
- + Climate comfort by ventilation system
- + D3O protectors at knee and hip
- + Knee protector pocket with multiple height positions
- + Washable 1.1mm cowhide leather reinforcement at inside knee
- + Double fabric layers for reinforcement at knee and bottom
- + 70cm long connection zipper
- + 2 outer pockets
- + Adjustments at waist and hem
- + Stretch panels for best action
- + Anti-slip panel at bottom area
- + Large reflective panel for best visibility
- + Snap and hook closure



grey/yellow
1120



sapphire blue/lunar grey
6370

SCOTT RAIN & VISIBILITY



SCOTT ERGONOMIC PRO DP RAIN JACKET

233748

(D-SIZE) 246419



The SCOTT Ergonomic Pro DP Rain Jacket is best suited when Mother Nature unleashes her fury. Featuring a stretchable and breathable outer material with laminated DRYOsphere membrane for perfect fit and comfortable wind and weather protection, it also delivers minimum packing volume.

CONSTRUCTION: Stretchable breathable, windproof and waterproof DRYOsphere membrane

COMPOSITION: 65% Polyurethan, 35% Polyester

FIT: Regular

SIZE: XS-4XL

APPROX. WEIGHT (KG): 0.5kg

FEATURES:

- + Waterproof labyrinth closure system
- + Safety belt
- + Reflective elements for best visibility
- + Adjustments at collar and cuff
- + Comes with a transportation-bag



yellow
0005
(COLOR AVAILABLE IN D-SIZE)



black
0001



SCOTT ERGONOMIC PRO DP RAIN PANT

233749
(D-SIZE) 246420



The SCOTT Ergonomic Pro DP Rain Pant is best suited when Mother Nature unleashes her fury. Featuring a stretchable and breathable outer material with laminated DRYOsphere membrane for perfect fit and comfortable wind and weather protection, it also delivers minimum packing volume.

CONSTRUCTION: Stretchable breathable, windproof and waterproof DRYOsphere membrane

COMPOSITION: 65% Polyurethan, 35% Polyester

FIT: Regular

SIZE: XS-4XL

APPROX. WEIGHT (KG): 0.5kg

FEATURES:

- + High-waisted kidney area
- + Reflective elements for best visibility
- + Adjustments at waist
- + Comes with a transportation-bag



black
0001
(COLOR AVAILABLE IN D-SIZE)

SCOTT ERGONOMIC PRO DP WOMEN'S RAIN JACKET

246418



The SCOTT Ergonomic Pro DP W's Rain Jacket is best suited when Mother Nature unleashes her fury. Featuring a stretchable and breathable outer material with laminated DRYOsphere membrane for perfect fit and comfortable wind and weather protection, it also delivers minimum packing volume.

CONSTRUCTION: Stretchable breathable, windproof and waterproof DRYOsphere membrane

COMPOSITION: 65% Polyurethane, 35% Polyester

FIT: Regular

SIZE: 36-48

APPROX. WEIGHT (KG): 0.5kg

FEATURES:

- + Waterproof labyrinth closure system
- + Safety belt
- + Reflective elements for best visibility
- + Adjustments at collar and cuff
- + Comes with a transportation-bag



black
0001



yellow
0005

SCOTT ERGONOMIC PRO DP WOMEN'S RAIN PANT

246421



The SCOTT Ergonomic Pro DP W's Rain Pant is best suited when Mother Nature unleashes her fury. Featuring a stretchable and breathable outer material with laminated DRYOsphere membrane for perfect fit and comfortable wind and weather protection, it also delivers minimum packing volume.

CONSTRUCTION: Stretchable breathable, windproof and waterproof DRYOsphere membrane

COMPOSITION: 65% Polyurethane, 35% Polyester

FIT: Regular

SIZE: 36-48

APPROX. WEIGHT (KG): 0.5kg

FEATURES:

- + High-waisted kidney area
- + Reflective elements for best visibility
- + Adjustments at waist
- + Comes with a transportation-bag



black
0001

SCOTT
JEANS



SCOTT DENIM STRETCH PANT

246407

SAS-TEC
body protection systems

The stylish SCOTT Denim Stretch Pants looks like an ordinary pair of jeans, but is actually a sophisticated motorcycle pant. Stretch material in the denim makes riding more comfortable than ever and offers all the freedom of movement you need. Reinforced with Aramid fabric and featuring built-in SAS-TEC knee protectors with the option to add in hip protectors too, this pant is fully ready for the open road or dusty trail.

CONSTRUCTION: 8oz denim reinforced with Aramid fabric

COMPOSITION: 98% Cotton, 2% Elastane, **LINING:** 52% Aramid, 48% Polyester

FIT: Slim

SIZE: S-3XL

APPROX. WEIGHT (KG): 1.2kg

FEATURES:

- + Dark tint, used and crinkle effect
- + Adjustable length by single cuff with reflective binding
- + SAS-TEC protectors at knee. Pocket for optional hip protector
- + Hybrid knee protector pocket for two height positions
- + Aramid reinforcements
- + Reflective elements for best visibility
- + 4 outer pockets
- + 1 coin pocket
- + Belt loops



black
0001



blue
0003

SCOTT DENIM STRETCH WOMEN'S PANT

246417

SAS-TEC
body protection systems

The stylish SCOTT Denim Stretch Women's Pants looks like an ordinary pair of jeans, but is actually a sophisticated motorcycle pant. Stretch material in the denim makes riding more comfortable than ever and offers all the freedom of movement you need. Reinforced with Aramid fabric and featuring built-in SAS-TEC knee protectors with the option to add in hip protectors too, this pant is fully ready for the open road or dusty trail.

CONSTRUCTION: 8oz denim reinforced with aramid fabric

COMPOSITION: 98% Cotton, 2% Elastane, **LINING:** 52% Aramid, 48% Polyester

FIT: Slim

SIZE: 36-46

APPROX. WEIGHT (KG): 1.1kg

FEATURES:

- + Dark tint, used, crinkle and mustard effect
- + Adjustable length by single cuff with reflective binding
- + SAS-TEC protectors at knee. Pocket for optional hip protector
- + Hybrid knee protector pocket for two height positions
- + Aramid reinforcements
- + Reflective elements for best visibility
- + 4 outer pockets
- + 1 coin pocket
- + Belt loops



black
0001



blue
0003

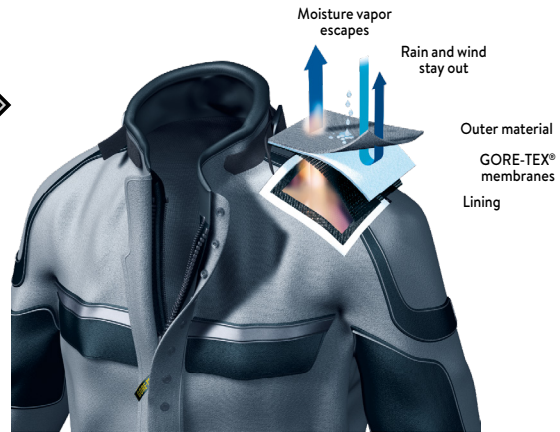
F A B R I C T E C H N O L O G I E S

Our research and development team works with leading manufacturers around the world to deliver revolutionary fabric technologies that protect you from the elements, give more comfort to your body and maximize your enjoyment of outdoor activities, 365 days a year.

G O R E - T E X T E C H N O L O G Y

GUARANTEED TO KEEP YOU DRY™ PROMISE

For more than 30 years, GORE-TEX products have been delivering comfort and protection so you can enjoy your outdoor activities with confidence. The GORE-TEX membrane is integrated in the garment between the outer material and the lining. It is a perfect barrier to rain and wind, while allowing perspiration to escape. Even in cases of extreme physical exertion, humidity will be transported to the outside of the clothing system and you always stay comfortable in your SCOTT garments engineered with GORE-TEX products.



3-LAYER GORE-TEX CONSTRUCTION

For extreme conditions and for best weather protection. Outshell, membrane and lining bonded to a functional layer.

P I T T A R D S ® W O R L D C L A S S L E A T H E R

A DIGITAL LEATHER PRODUCED IN THE UK

Motorcyclists worldwide demand the highest level of performance from their protective equipment.



D R Y O S P H E R E

WATERPROOF/WINDPROOF/BREATHABLE BARRIER

DRYosphere fabrics provide a waterproof/windproof/breathable barrier, protecting you from the elements. This combination of protection and breathability keeps you dry and comfortable in any condition.



WATERPROOF

Helps you stay dry with eco-compatible durable water repellent technology (DWR) on the outermost surface. It also helps to repel stains.

WINDPROOF

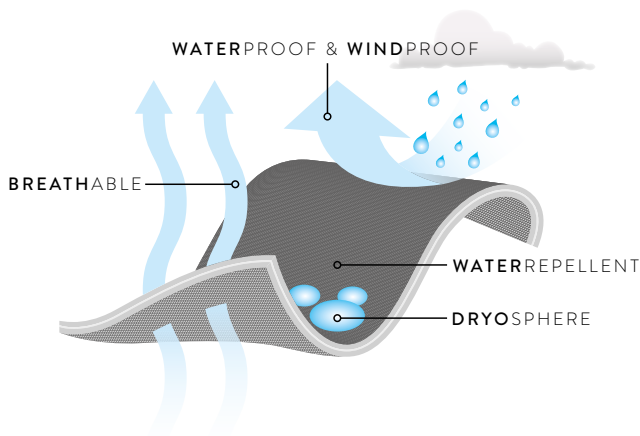
DWR technology also helps you stay warm by blocking out the wind.

BREATHABLE

Helps to regulate your body temperature and keep you comfortable by enabling vapor to escape.

DRYOSPHERE

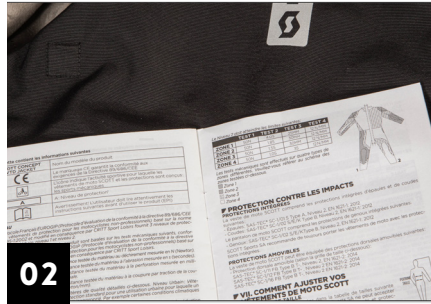
DRYosphere fabrics provide a waterproof/windproof/breathable barrier, protecting you from the elements.



SCOTT APPAREL FEATURES



01



02



03



04



05



06



07



08



09



10



11



12

01. D3O PROTECTION

02. CERTIFICATION AGAINST EN 17092

03. LEATHER REINFORCEMENT

04. DIRECT VENTILATION

05. REFLECTIVE ELEMENTS

06. EASY FIX SYSTEM

07. QUILTED MESH

08. CONNECTION ZIPPER

09. KIDNEY INSULATION

10. GOGGLE CLOTH

11. FIDLOCK MAGNETIC SNAP

12. MATCHING TRIMS

APPAREL OVERVIEW

ADVENTURE

272869
PRIORITY GTX
JACKET



black
0001

272873
PRIORITY GTX
PANT



black
0001

272870
VOYAGER DRYO
JACKET



black
0001



grey/night blue
6366



iron grey/beige
6367

272874
VOYAGER DRYO
PANT



black
0001



grey/night blue
6366



iron grey/beige
6367

272878
VOYAGER DRYO
WOMEN'S JACKET



black
0001

272881
VOYAGER DRYO
WOMEN'S PANT



black
0001

272871
DUALRAID DRYO
JACKET



night blue/moss green
6368
(COLOR AVAILABLE
IN D-SIZE)



grey/yellow
1120



black/iron grey
3862
(COLOR AVAILABLE
IN D-SIZE)



sapphire blue/lunar
grey
6370

272871
DUALRAID DRYO
JACKET



night blue
3032
(COLOR AVAILABLE IN
D-SIZE)



grey/yellow
1120

272879
DUALRAID DRYO
WOMEN'S JACKET



black/iron grey
3862
(COLOR AVAILABLE IN D-SIZE AND
TALL SIZE)

272882
DUALRAID DRYO
WOMEN'S PANT



sapphire blue/lunar
grey
6370
(COLOR AVAILABLE IN TALL-SIZE)



grey/yellow
1120



sapphire blue/lunar
grey
6370



grey/yellow
1120

285594
ADV TERRAIN
DRYO JACKET



sapphire blue/lunar
grey
6370



black
0001



black/grey
1001

285595
ADV TERRAIN
DRYO PANT



black
0001

RAIN & VISIBILITY

233748
(D-SIZE) 246419
ERGONOMIC PRO
DP RAIN JACKET



yellow
0005
color available in
D-Size

233749
(D-SIZE) 246420
ERGONOMIC PRO
DP RAIN PANT



black
0001

246418
ERGONOMIC PRO
DP WOMEN'S
RAIN JACKET



yellow
0005

246421
ERGONOMIC PRO
DP WOMEN'S
RAIN PANT



black
0001

246421
ERGONOMIC PRO
DP WOMEN'S
RAIN PANT



black
0001

JEANS

246407
DENIM STRETCH
PANT



black
0001

246417
DENIM STRETCH
WOMEN'S PANT



blue
0003

246407
DENIM STRETCH
PANT



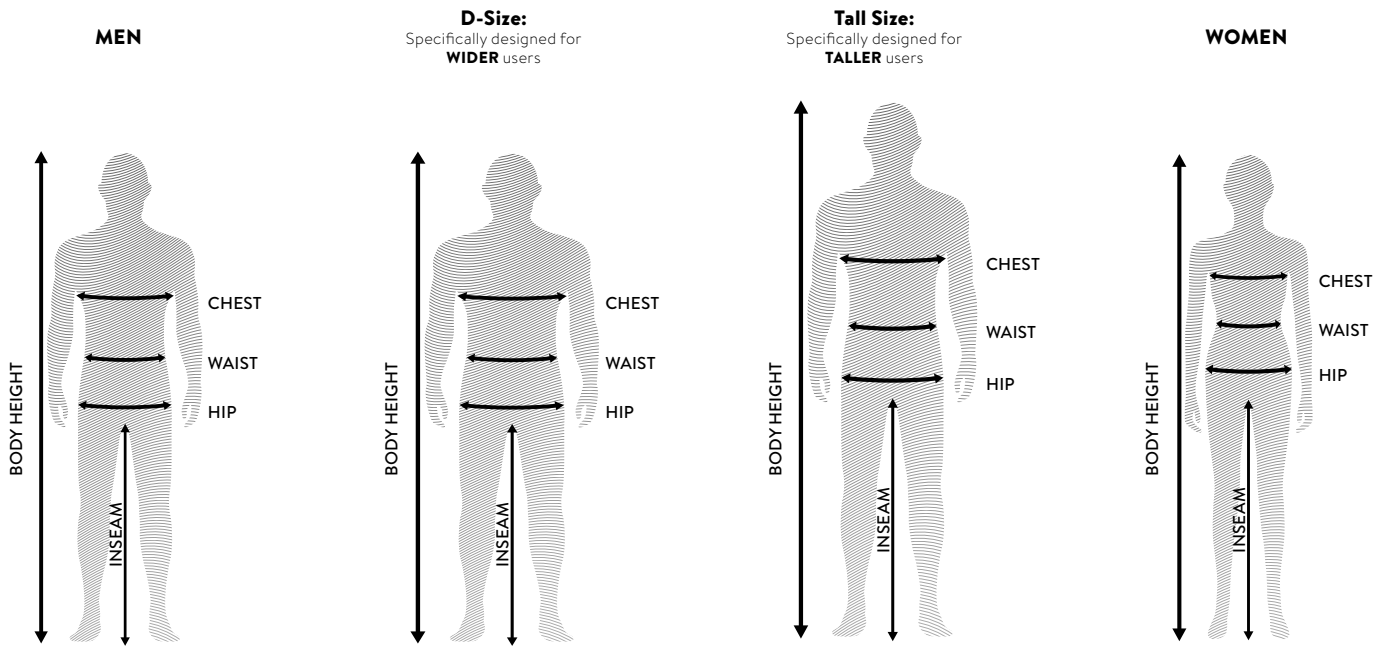
black
0001

246417
DENIM STRETCH
WOMEN'S PANT



blue
0003

SIZE CHART ADVENTURE APPAREL



MEN																		
UNISEX	XS		S		M		L		XL		2XL		3XL		4XL		5XL	
GERMANY	44		46		48/50		50/52		52/54		54/56		58/60		60/62		62/64	
FRANCE	46		48		50/52		52/54		54/56		56/58		60/62		62/64		64/66	
FITTING	CM	IN	CM	IN	CM	IN	CM	IN	CM	IN	CM	IN	CM	IN	CM	IN	CM	IN
BODY HEIGHT	164 - 168	64.6 - 66.1	168 - 173	66.1 - 68.1	173 - 179	68.1 - 70.5	179 - 185	70.5 - 72.8	182 - 188	71.7 - 74	185 - 191	72.8 - 75.2	188 - 194	74 - 76.4	191 - 197	75.2 - 77.6	194 - 200	76.4 - 78.7
CHEST	89 - 93	35 - 36.6	93 - 97	36.6 - 38.2	97 - 102	38.2 - 40.2	102 - 108	40.2 - 42.5	108 - 114	42.5 - 44.9	114 - 120	44.9 - 47.2	120 - 126	47.2 - 49.6	126 - 132	49.6 - 52	132 - 138	52 - 54.3
WAIST	80 - 86	31.5 - 33.9	84 - 90	33.1 - 35.4	90 - 94	35.4 - 37	94 - 98	37 - 38.6	98 - 104	38.6 - 40.9	104 - 110	40.9 - 43.3	110 - 116	43.3 - 45.7	116 - 122	45.7 - 48	120 - 126	47.2 - 49.6
HIP	90 - 95	35.4 - 37.4	95 - 99	37.4 - 39	99 - 103	39 - 40.6	103 - 107	40.6 - 42.1	107 - 113	42.1 - 44.5	113 - 119	44.5 - 46.9	119 - 125	46.9 - 49.2	125 - 131	49.2 - 51.6	131 - 137	51.6 - 53.9
INSEAM	80 - 81	31.5 - 31.9	81 - 82	31.9 - 32.3	82 - 83	32.3 - 32.7	83 - 84	32.7 - 33.1	84 - 85	33.1 - 33.5	85 - 86	33.5 - 33.9	86 - 87	33.9 - 34.3	87 - 88	34.3 - 34.6	88 - 89	34.6 - 35
MEN D-SIZE																		
UNISEX	D-XS		D-S		D-M		D-L		D-XL		D-2XL		D-3XL		D-4XL		D-5XL	
GERMANY	24		25		26		27		28		29		30		31		32	
FITTING	CM	IN	CM	IN	CM	IN	CM	IN	CM	IN	CM	IN	CM	IN	CM	IN	CM	IN
BODY HEIGHT	162 - 168	63.8 - 66.1	168 - 172	66.1 - 67.7	172 - 176	67.7 - 69.3	174 - 178	68.5 - 70.1	176 - 180	69.3 - 70.9	178 - 182	70.1 - 71.7	180 - 184	70.9 - 72.4	182 - 186	71.7 - 73.2	184 - 190	72.4 - 74.8
CHEST	86 - 100	33.9 - 39.4	100 - 104	39.4 - 40.9	104 - 109	40.9 - 42.9	109 - 115	42.9 - 45.3	115 - 121	45.3 - 47.6	121 - 127	47.6 - 50	127 - 133	50 - 52.4	133 - 139	52.4 - 54.7	139 - 145	54.7 - 57.1
WAIST	92 - 99	36.2 - 39	96 - 105	37.8 - 41.3	102 - 108	40.2 - 42.5	106 - 112	41.7 - 44.1	110 - 118	43.3 - 46.5	116 - 124	45.7 - 48.8	122 - 130	48 - 51.2	128 - 136	50.4 - 53.5	132 - 140	52 - 55.1
HIP	95 - 100	37.4 - 39.4	100 - 104	39.4 - 40.9	104 - 108	40.9 - 42.5	108 - 112	42.5 - 44.1	112 - 118	44.1 - 46.5	118 - 124	46.5 - 48.8	124 - 130	48.8 - 51.2	130 - 136	51.2 - 53.5	136 - 142	53.5 - 55.9
INSEAM	77 - 80	30.3 - 31.5	78 - 81	30.7 - 31.9	79 - 82	31.1 - 32.3	80 - 83	31.5 - 32.7	81 - 84	31.9 - 33.1	82 - 86	32.3 - 33.9	83 - 87	32.7 - 34.3	84 - 89	33.1 - 35	86 - 91	33.9 - 35.8
TALL SIZE																		
UNISEX	TALL-M			TALL-L			TALL-XL			TALL-2XL			TALL-3XL			TALL-4XL		
GERMANY	98			102			106			110			114			118		
FITTING	CM	IN		CM	IN		CM	IN		CM	IN		CM	IN		CM	IN	
BODY HEIGHT	179 - 185	70.5 - 72.8		182 - 188	71.7 - 74		186 - 192	73.2 - 75.6		190 - 196	74.8 - 77.2		194 - 200	76.4 - 78.7		199 - 205	78.3 - 80.7	
CHEST	93 - 100	36.6 - 39.4		97 - 104	38.2 - 40.9		103 - 110	40.6 - 43.3		109 - 116	42.9 - 45.7		115 - 121	45.3 - 47.6		120 - 125	47.2 - 49.2	
WAIST	87 - 93	34.3 - 36.6		91 - 97	35.8 - 38.2		96 - 103	37.8 - 40.6		102 - 109	40.2 - 42.9		108 - 114	42.5 - 44.9		113 - 120	44.5 - 47.2	
HIP	93 - 105	36.6 - 41.3		97 - 113	38.2 - 44.5		103 - 118	40.6 - 46.5		109 - 123	42.9 - 48.4		115 - 120	45.3 - 47.2		121 - 126	46.5 - 49.6	
INSEAM	88 - 89	34.6 - 35		89 - 90	35 - 35.4		90 - 91	35.4 - 35.8		91 - 92	35.8 - 36.2		92 - 93	36.2 - 36.6		92 - 93	36.2 - 36.6	
WOMEN																		
UNISEX	XS		S		M		L		XL		2XL		3XL		4XL			
GERMANY	34		36		38		40		42		44		46		48			
FRANCE	36		38		40		42		44		46		48		50			
FITTING	CM	IN	CM	IN	CM	IN	CM	IN	CM	IN	CM	IN	CM	IN	CM	IN		
BODY HEIGHT	160 - 164	63 - 64.6	164 - 168	64.6 - 66.1	168 - 170	66.1 - 66.9	170 - 174	66.9 - 68.5	174 - 178	68.5 - 70.1	178 - 182	70.1 - 71.7	178 - 182	70.1 - 71.7	178 - 184	70.1 - 72.4		
CHEST	81 - 85	31.9 - 33.5	85 - 89	33.5 - 35	88 - 92	34.6 - 36.2	90 - 97	35.4 - 38.2	95 - 103	37.4 - 40.6	101 - 109	39.8 - 42.9	107 - 115	42.1 - 45.3	113 - 121	44.5 - 47.6		
WAIST	71 - 75	28 - 29.5	74 - 79	29.1 - 31.1	77 - 82	30.3 - 32.3	81 - 86	31.9 - 33.9	85 - 90	33.5 - 35.4	89 - 94	35 - 37	93 - 98	36.6 - 38.6	97 - 102	38.2 - 40.2		
HIP	90 - 94	35.4 - 37	94 - 98	37 - 38.6	98 - 102	38.6 - 40.2	102 - 106	40.2 - 41.7	106 - 110	41.7 - 43.3	110 - 114	43.3 - 44.9	114 - 118	44.9 - 46.5	118 - 122	46.5 - 48		
INSEAM	77 - 79	30.3 - 31.1	77 - 80	30.3 - 31.5	78 - 80	30.7 - 31.5	78 - 81	30.7 - 31.9	78 - 82	30.7 - 32.3	79 - 82	31.1 - 32.3	79 - 83	31.1 - 32.7	80 - 84	31.5 - 33.1		



SCOTT
ADVENTURE
GLOVES

THE FULL SCOTT ADVENTURE GLOVES LINE IS
EN 17092-3:2020, CLASS AA CERTIFIED



SCOTT ADVENTURE GLOVES

SCOTT Adventure Motorcycle gloves feature the perfect blend of functional details, technical materials and a quality fit. Our developers used high-end fabrics to create a collection of comfortable, durable and protective gloves that have been fully engineered to handle even the wildest of adventures.





ASSAULT PRO GLOVE

THE PERFECT BLEND OF PROTECTION AND PERFORMANCE

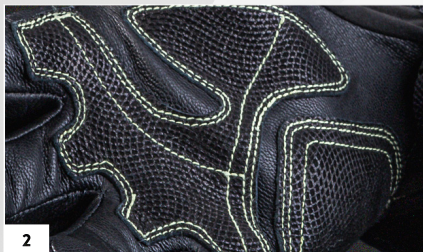
The new Assault Pro glove comes locked and loaded with the best tech in the industry. Fully engineered for riders that aren't afraid to attack the road or trail, this highly-durable glove won't let you down.



1

FULL LEATHER PALM WITH DIGITAL REINFORCEMENT

This combination of classic materials and modern construction methods produces a highly durable, protective glove that will stand the test of time.



2

ANATOMICAL PALM REINFORCEMENT

An extra layer of comfortable, ergonomic protection keeps your hands in one piece throughout your entire adventure.



3

CARBON KNUCKLE PROTECTION

Lightweight, flexible and highly protective, this is the ultimate solution to protecting your hands wherever you ride.

SCOTT ASSAULT PRO GLOVE

278616

The SCOTT Assault Pro Glove is a beefed-up version of the already highly-technical Assault glove. Featuring an upgraded, full leather palm with digital reinforcement, palm padding and carbon knuckle protection, this bomb-proof glove means serious business. A Velcro closure system will keep the Assault Pro secure and locked in every time you twist the throttle.

CERTIFICATION LEVEL: CE certified CAT. 2 according to EN 13594 Level 1 (KP)

CONSTRUCTION: BOH: Goatskin leather and Span, **PALM:** Full Goatskin leather, **PALM REINFORCEMENT:** Digital Goatskin leather with Kevlar stitching, **CLOSURE:** Velcro

COMPOSITION: MAIN FABRIC: 70% leather, 15% Polyamide, 10% Polyester, 3% Elastane, 2% Polyurethane

PADDING: Foam

FIT: Slim

SIZE: 2XS-3XL

RANGE OF USE: Sport Adventure

FEATURES:

- + Full leather palm with digital reinforcement
- + Anatomical palm reinforcement
- + Carbon knuckle protection
- + Velcro wrist closure



black
0001



black/white
1007

SCOTT TRAFIX DP GLOVE

273329

The SCOTT Trafix DP Glove, designed almost entirely out of goat skin leather with a breathable, wind and waterproof DRYOsphere membrane, is the premier adventure glove for all conditions.

CERTIFICATION LEVEL: CE certified CAT. 2 according to EN 13594 Level 1 (KP)

CONSTRUCTION: BOH: Goatskin leather, **PALM:** Goatskin leather, **INSERT:** DRYOsphere, **LINING:** Soft fleece

COMPOSITION: MAIN FABRIC: 85% Goat leather (made in Pakistan), 8% Polyamide, 4% Polyurethane, **INSERT:** 100% Polyurethane, **LINING:** 100% Polyester

FIT: Regular

SIZE: 2XS-3XL

RANGE OF USE: Sport Adventure

FEATURES:

- + Foam knuckle protection
- + Side reinforcement
- + Conductive index finger
- + Reflective print outside pinky finger
- + Cuff closure
- + Wrist closure
- + Long cuff



black
1004



black/pink
1254

SCOTT SPORT ADV GLOVE

267305

The SCOTT Sport ADV Glove features premium goat leather, hard knuckle protection, cuff closure and conductive finger, all coming together to equip you for any adventure.

CERTIFICATION LEVEL: CE certified CAT. 2 according to EN 13594 Level 1 (KP)

CONSTRUCTION: BOH: Goatskin leather, **PALM:** Goatskin leather, **LINING:** Bemberg

COMPOSITION: MAIN FABRIC: 80% Goat leather (made in Pakistan) 10% Polyamide, 5% Polyurethane, 5% other fibres, **LINING:** 100% Polyester

FIT: Regular

SIZE: S-3XL

RANGE OF USE: Sport Adventure

FEATURES:

- + Premium leather
- + Hard knuckle protection
- + Aramid abrasion reinforcement
- + Cuff closure



dark grey/lime green
2900



black
0001

SCOTT DUALRAID GLOVE

264652



black/cyber yellow
5139

The SCOTT Dualraid Glove is your choice for all around adventure thanks to upholstered knuckles with TPR injection and back of the hand ventilation.

CERTIFICATION LEVEL: CE certified CAT. 2 according to EN 13594 Level 1 (KP)

CONSTRUCTION: BOH: Stretch fabric, PALM: Goatskin leather with tuff combined, CUFF: Polychloroprene, LINING: Soft fleece

COMPOSITION: MAIN FABRIC: 35% Polyamide, 25% Goat leather (made in Indonesia), 18% Polychloroprene, 10% Polyurethane, 6% Elastane, 6% Polyester, LINING: 100% Polyester

FIT: Slim

SIZE: S-3XL

RANGE OF USE: Sport Adventure

FEATURES:

- + Direct injection knuckle protection
- + Perforated leather palm
- + Side reinforcements
- + Conductive index finger
- + Wrist closure
- + Cuff closure
- + Medium cuff length



black
0001

GLOVE OVERVIEW

■ ADVENTURE GLOVE

278616
ASSAULT PRO
GLOVE



black
1004



black/white
1007

267305
SPORT ADV
GLOVE



black
0001



dark grey/lime green
2900

264652
DUALRAID GLOVE



black
0001



black/cyber yellow
5139

273329
TRAFIX DP GLOVE



black
1004



black/pink
1254

SIZE CHART GLOVE

		UNISEX																	
SIZE		3XS		2XS		XS		S		M		L		XL		2XL		3XL	
NUMERIC SIZE		6.5		7		7.5		8		8.5		9		10		11		12	
		CM	IN	CM	IN	CM	IN	CM	IN	CM	IN	CM	IN	CM	IN	CM	IN	CM	IN
HAND CIRCUMFERENCE	15.2 - 16.5	6 - 6.5	16.5 - 17.8	6.5 - 7	17.8 - 19.1	7 - 7.5	19.1 - 20.3	7.5 - 8	20.3 - 21.6	8 - 8.5	21.6 - 22.9	8.5 - 9	22.9 - 25.4	9 - 10	25.4 - 27.9	10 - 11	27.9 - 30.5	11 - 12	
HAND LENGTH	14.5 - 16	5.7 - 6.3	15.5 - 17	6.1 - 6.7	16.5 - 18	6.5 - 7.1	17.5 - 19	6.9 - 7.5	18.5 - 20	7.3 - 7.9	19.5 - 21	7.7 - 8.3	20.5 - 22	8.1 - 8.7	21.5 - 23	8.5 - 9.1	22.5 - 24	8.9 - 9.4	
HAND WIDTH	6.5	2.4	7	2.7	7.5	2.7	8	3.1	8.5	3.1	9.5	3.5	10.5	3.9	11.5	4.3	13	4.7	