



SCOTT
BOOTS



SCOTT BOOT TECHNOLOGIES

THE 550 BOOT IS THE END RESULT OF COMBINING TECHNICAL LAB ENGINEERING WITH VIGOROUS ON TRACK TESTING. FOCUSING ON THE DEMANDS OF RIDERS WE HAVE EMPLOYED NEW INNOVATIONS TO ENHANCE THE MOBILITY, COMFORT AND OVERALL RESPONSIVENESS. CONSTRUCTED IN ITALY, THE LIGHT WEIGHT DESIGN INCORPORATES IMPORTANT FEATURES THAT HEIGHTEN PERFORMANCE WHILE WARRANTING SAFETY AND DURABILITY.

PROTECTIVE SHIN GUARD

Combined with a knee brace, the elongated design of the protective shin guard shields the entire leg from harmful impact without sacrificing mobility.

RUBBER GRIP GUARD

The Rubber Grip Guard incorporates a thin layer of soft vulcanized rubber over a large surface area on the inside of the calf. This design increases a rider's ability to feel and respond to the pressure and movements he or she applies to the bike. The added sensitivity allows for a reduction in the lateral force against the bike, resulting in decrease in muscle fatigue.

EASY LOCKING BUCKLES

Constructed to simplify the closing and opening of the boot, the Easy Locking Buckles can be fastened/unfastened with minimal effort. With only the use of thumb and forefinger the aluminum buckle easily hooks into the steel ring without the need of any additional force. Once closed, the contouring shape of the buckles increases safety by preventing accidental unfastening.

CERTIFIED LEVEL 2 NORM 13634





FREE OPEN ENTRANCE

The free open entrance allows the boot to open from both the lateral and the medial sides of the leg. This accommodates a broad range of calf sizes and enables exceptionally fast and easy entry or removal. The two piece system permits riders to adjust the tightness and tension around the entire leg without creating unwanted twisting of the boot or pressure points along the buckle closers.



FLEX CALF JOINT

The flexibility of the flex calf joint permits the boot to comfortably form to different leg shapes and increases the overall compression of the boot.

MULTI-AXIAL PIVOT

Located on the boot to fit directly over the malleolus, the Multi Axial Pivot is designed to automatically align with the anatomy of the rider. This allows the boot to more closely match the natural movement of the ankle, while still providing ample protection against over flexion.

REPLACEABLE OUTSOLE INSERT

For added versatility the outsole can easily be changed to accommodate different riding types. This option also increases the durability and longevity of the boots.





white orange - 1088



white/white - 2597



black/green - 1043

550 SIZE CHART

| | | | | | | | | | | |
|----|------|-----|-----|-----|------|------|------|------|------|------|
| EU | 39.0 | 40 | 41 | 42 | 43 | 44 | 45 | 46 | 47 | 48 |
| US | 7.0 | 8.0 | 9.0 | 9.5 | 10.0 | 11.0 | 12.0 | 13.0 | 13.5 | 14.0 |

CERTIFIED LEVEL 2 NORM 13634

SCOTT 550 MX BOOT

236369

Tried and tested the new 550 boot was engineered for high performance. Carefully crafted, important features include the multi-axial pivot, replaceable outsole insert, easy locking buckles and the free open entrance. Made in Italy, this lightweight boot combines durability and protection with mobility, grip and feel, ready to improve the precision of even the best riders.

SIZES: 39-48

CONSTRUCTION: EXTERNAL: Polyurethane plastics composite, rubber outsole, rubber frame guard, INTERNAL: Polyamide / Polyester

FEATURES

- + Free Open Entrance
- + Multi-axial Pivot
- + Replaceable Outsole Insert
- + Easy Locking Buckles
- + Flex Calf Joint
- + Adjustable Straps
- + Shifter Grip Area
- + Rubber Frame Guard
- + Protective Shin Guard

SCOTT 350 MX BOOT

237762

Designed in Italy, the SCOTT 350 boot is built with top grain Leather and offers maximum support and comfort right out of the box. The 350 boot offers a low profile toe box that allows for easy shifting and an over molded outsole for added durability.

SIZES: 39-48 (w/o 43, 47)

CONSTRUCTION: EXTERNAL: Polyurethane, leather, Rubber outsole, **INTERNAL:** Polyamide, Polyester

FEATURES

- + Molded outsole according ISO 4649 provides durability
- + Full grain leather construction with heat protection shield
- + Low profile toe box design
- + Full floating independent adjustable straps
- + Reverse lower buckle protected from outside impact
- + Skywalk vulcanized sole



white/blue - 1029



black/green - 1043



black/black - 1401



white/white - 2597

350 SIZE CHART

| | | | | | | | | |
|----|-----|-----|-----|-------|------|------|-------|------|
| EU | 39 | 40 | 41 | 42/43 | 44 | 45 | 46/47 | 48 |
| US | 6.0 | 7.0 | 8.0 | 9.0 | 10.0 | 11.0 | 12.0 | 13.0 |

CERTIFIED LEVEL 2 NORM 13634

BOOT ACCESSORIES

SCOTT 250/350 MX BOOT STRAP & PLASTIC BUCKLE SET

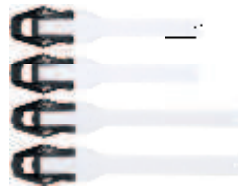
237830



black/black - 1401



orange/white - 1362



white/white - 2597



green/black - 1089

SCOTT Boot Straps are high-quality replacements in case you lose one in a crash.

SIZES: one size

SCOTT 550 MX BOOT STRAP SET SCOTT 550 MX BOOT METAL BUCKLE SET

244911

244915



silver black



silver green

SCOTT Boot Straps are high-quality replacements in case you lose one in a crash.

SIZES: one size

SCOTT 550 MX BOOT SOLE INSERTS

244913



white

black

SCOTT 550 MX BOOT FOOTSTRAP PLATE SCOTT 550 MX BOOT BUCKLE HOOKS SET

244912

244916



white



black



silver black



green